

1789 TT

ScinoPharm Investor Conference

— 2026 06 04



Disclaimer

This material has been prepared by ScinoPharm Taiwan, Ltd. (“ScinoPharm”).

Any opinions expressed in this material are subject to change without notice as a result of using different assumptions. ScinoPharm is under no obligation to update or keep current the information contained herein. The **information contained** in this presentation is ScinoPharm’s **confidential** information.

Any disclosure, copying, distribution or any action taken or omitted to be taken in reliance on it is prohibited and may be unlawful.

No representation or warranty, express or implied, is or **will be made** in or in relation to, and no responsibility or liability is or will be accepted by the Company **as to**, the **accuracy or completeness** of this material and any liability therefore is hereby expressly disclaimed.

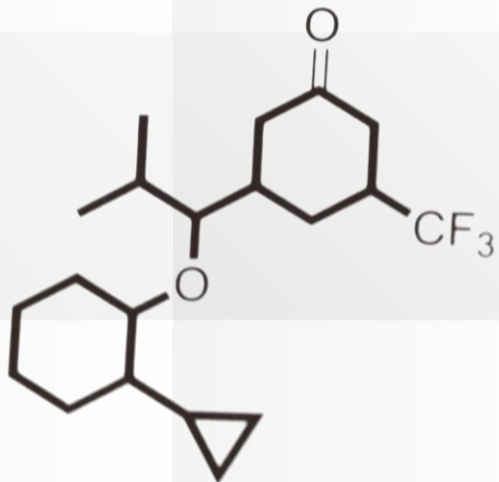
Statements made in this material include forward-looking statements, which include, without limitation, statements about the issues, plans and expectations of ScinoPharm. Without limiting the foregoing, statements including the words “believes”, “anticipates”, “plans”, “expects” and similar expressions are also forward-looking statements. Forward-looking statements reflect, among other things, management’s plans and objectives for future operations, current views with respect to future events and future economic performances and projections of various financial items. **These forward-looking statements involve known and unknown risks**, uncertainties and other factors **which may cause actual results to differ materially from those implied** by such forward-looking statements.

Agenda

01 Company Overview

02 Business Update

03 Financial Performance

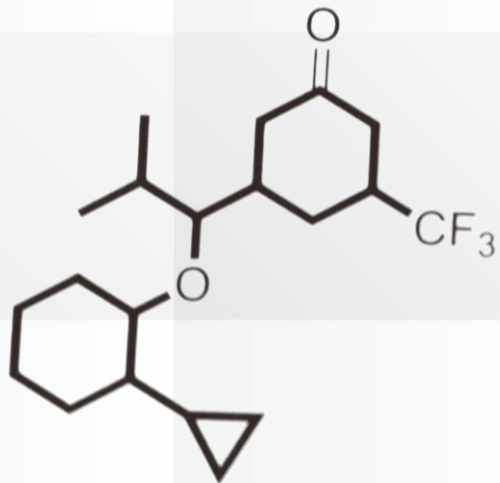


Company Overview



ScinoPharm at a Glance

- Est. 1997 in Taiwan with R&D/CGMP plants in Tainan and Changshu, China plus marketing forces in Tainan, Shanghai and Tokyo
- Specialize in high-barrier APIs and drug products development and manufacturing, dedicated to providing fully integrated solutions as a trusted strategic partner for global clients. Core business includes APIs, drug Products and CDMO services
- Tainan API plant was certified by key international regulators – US FDA, Japanese PMDA, EMA, EDQM, Australian TGA, Korea KFDA, Mexico COFEPRIS, Brazilian ANVISA, German Authority and TFDA. Injectable plant was certified by US FDA and TFDA
- Changshu API plant was certified by US FDA and Japanese PMDA

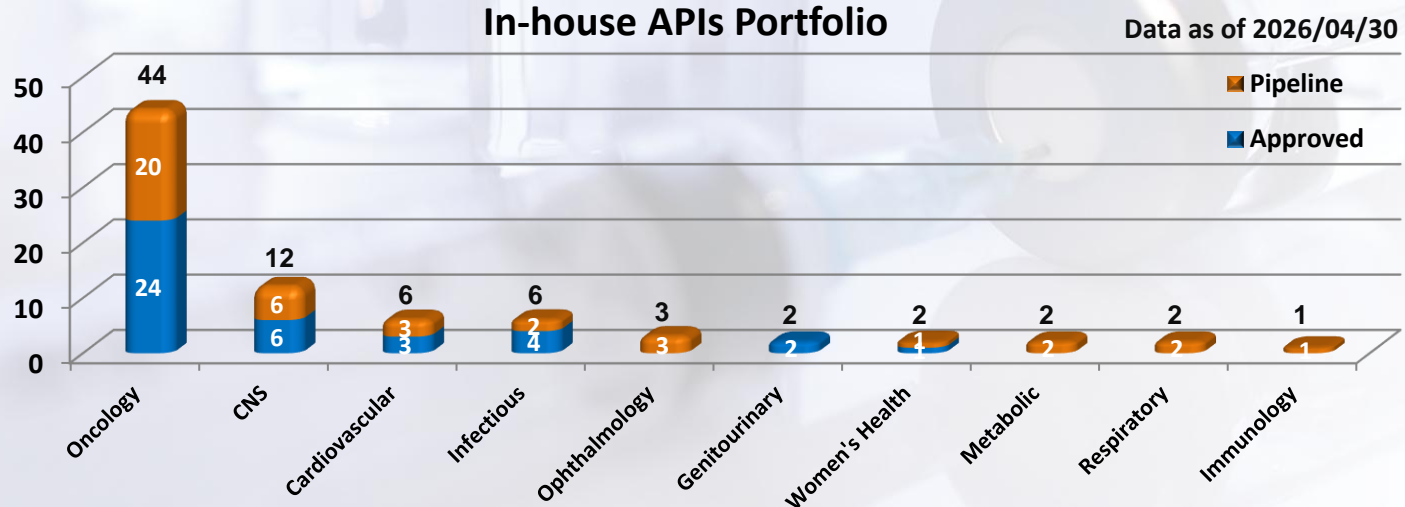


Business Update



Strengthening API Business

- 80 developed and DMF filings products, 989 active DMFs worldwide. 40 products have supported finished drug products in commercial markets. Continue to closely monitor customers' registration as well as commercial launches
- Maintain stable supply and respond to price competition with flexible pricing strategies, secure existing market share and proactively follow up with new customers and new markets to maximize the value of our proprietary API portfolio
- Accelerate the expansion of new product portfolio and pursue strategic partnerships with downstream formulation customers to secure supply opportunities and market share after commercial launch



Accelerating Drug Product Business Development

- 21 drug products have been developed, of which 4 products have obtained approvals in US and TW, with 3 products under review
- Products for treating multiple sclerosis have been shipped to the US for market launch; products for treating multiple myeloma have applied for National Health Insurance reimbursement in Taiwan, and preparations for product launch are underway
- Accelerate the approval of proprietary injectable products in US and TW and proactively expand non US market deployment

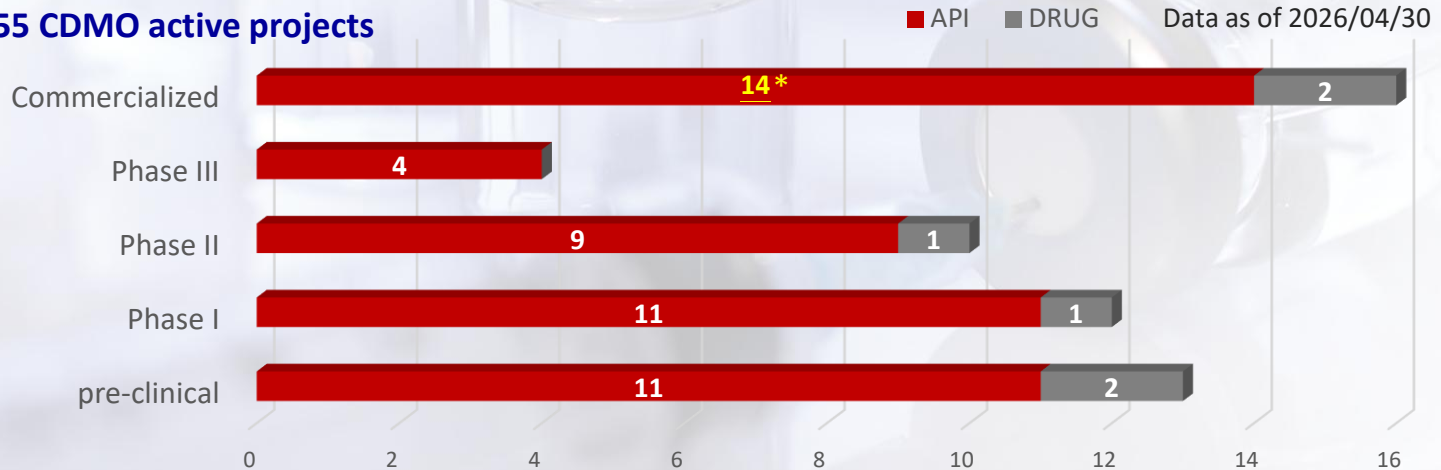
| Therapeutic Areas | Project Numbers | Indication | Under Development | Technical Package Ready | Under Registration | Approved |
|-------------------|-----------------|--|-------------------|-------------------------|--------------------|----------|
| Oncology | 11 | • Multiple Myeloma | 1 | | | <u>1</u> |
| | | • Leukemia • Myelodysplastic Syndromes • Oncology | 1 | 1 6 | | 1 |
| CNS | 2 | • Multiple Sclerosis • Reversal of Neuromuscular Blockade | | 1 | | 1 |
| Cardiovascular | 2 | • Thromboembolic Disorders • Medical Imaging Agents | | 1 | | 1 |
| Metabolism | 6 | • Osteoporosis • Diabetes Mellitus • Chronic Weight Management | 1 1 | 1 | 1 <u>1</u> 1 | |

Note: The number mark in blue indicates the registration submission both in US and TW have been approved or are under review

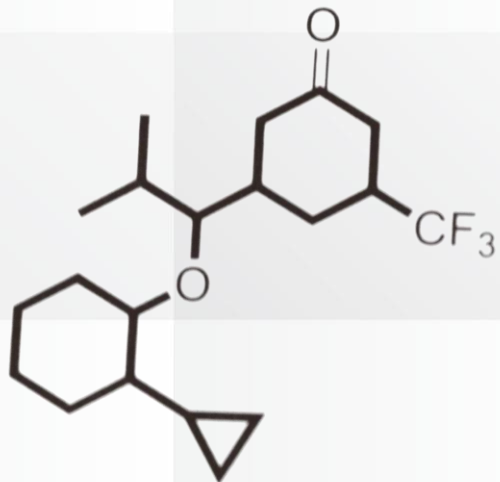
Expanding CDMO Services

- Total of 55 CDMO active projects, one API project was approved by FDA to begin Phase I clinical trial, and one API project in the Pre-clinical stage client terminated development
- Accelerate the accumulation of potential customers and actively strive for project proposals and successful project opportunities
- Continuously enhance international exposure and customer reach, leveraging the advantages of comprehensive one-stop services to secure projects for APIs and injectable formulations, thereby maintaining the growth momentum of CDMO business

55 CDMO active projects



* In May 2026, one commercialized product was added to API CDMO projects portfolio, bringing the total number of commercialized projects to 15



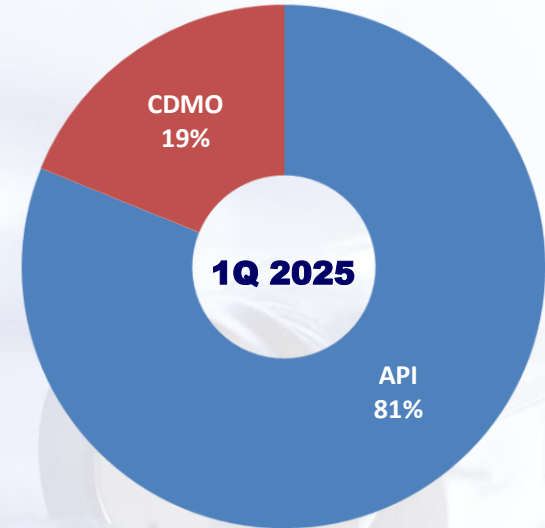
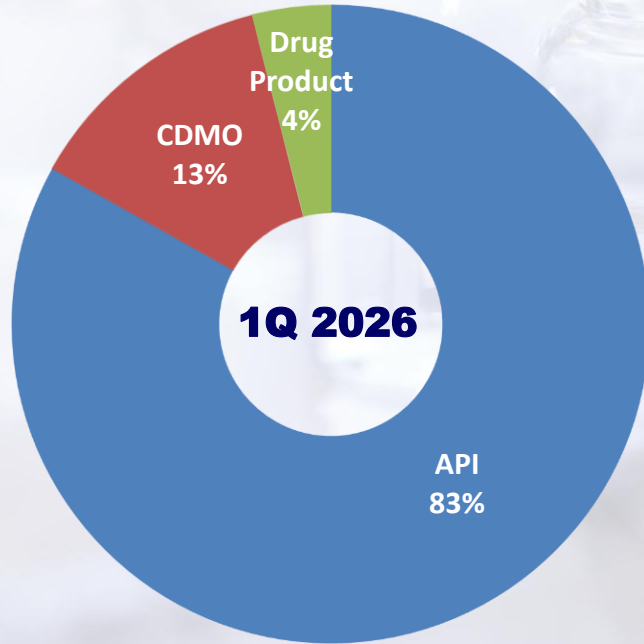
Financial Performance



Consolidated Income Statement

| NTD Million except for EPS | 1Q 2026 | | YoY | 1Q 2025 | |
|-------------------------------|---------|-------|------|---------|-------|
| | | | | | |
| Revenue | 660 | 100% | -4% | 686 | 100% |
| Gross Profit | 222 | 34% | -3% | 228 | 33% |
| Operating Expenses | (213) | (32%) | 13% | (188) | (27%) |
| Operating Profit | 9 | 1% | -79% | 40 | 6% |
| Net Profit before Tax | 19 | 3% | -66% | 58 | 8% |
| Net Profit after Tax | 17 | 3% | -64% | 46 | 7% |
| EPS (NTD) | 0.02 | - | - | 0.06 | - |

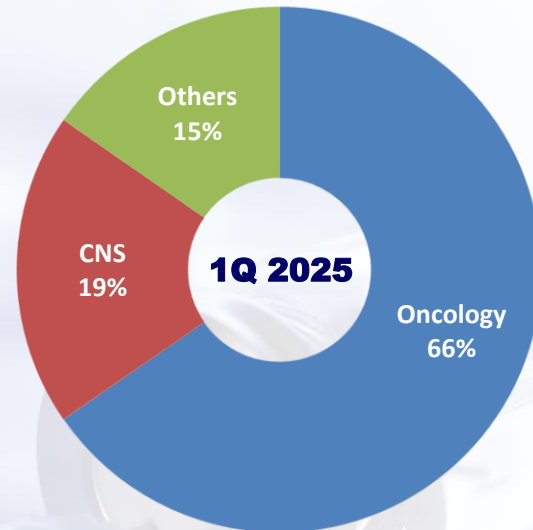
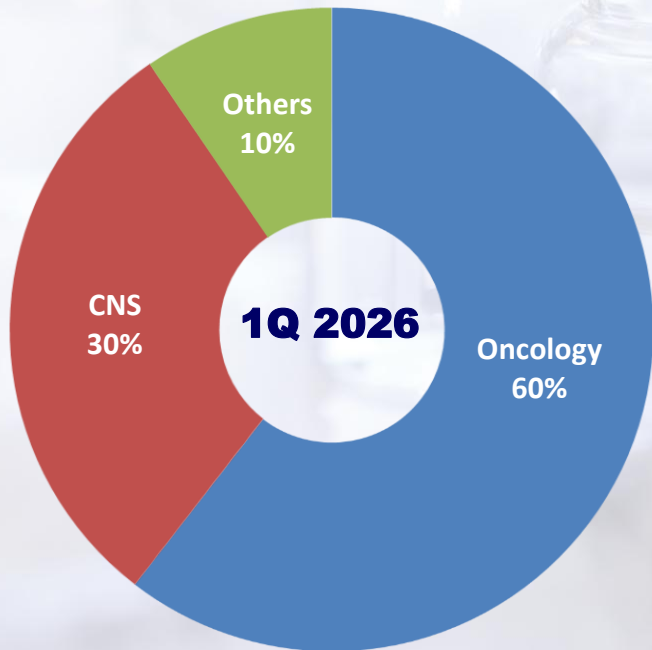
Sales Distribution – By Business



Unit: USD/M

| | API | CDMO | Drug Product |
|---------------|------|--------|--------------|
| 1Q 2026 Sales | 17.3 | 2.7 | 0.8 |
| YoY | 2.3% | -31.6% | NA |

Sales Distribution – By Indication



Unit: USD/M

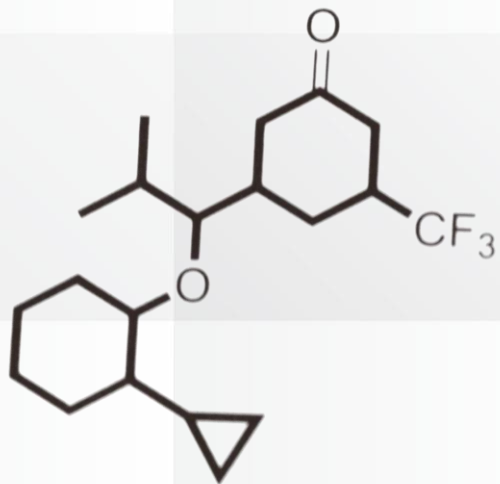
| | Oncology | CNS | Others |
|---------------|----------|-------|--------|
| 1Q 2026 Sales | 12.6 | 6.2 | 2.0 |
| YoY | -7.6% | 55.2% | -37.8% |

Consolidated Balance Sheet

| NTD Million | 2026/03/31 | | 2025/03/31 | |
|-------------------------------------|---------------|-------------|---------------|-------------|
| Cash and Cash Equivalents | 3,265 | 28% | 3,098 | 26% |
| Accounts Receivable | 501 | 4% | 447 | 4% |
| Inventories | 1,791 | 15% | 1,792 | 15% |
| Property, Plant & Equipment | 3,467 | 29% | 3,660 | 30% |
| Financial Assets | 1,093 | 9% | 1,309 | 11% |
| Other Current/Non-Current Assets | 1,743 | 15% | 1,754 | 14% |
| Total Assets | 11,860 | 100% | 12,060 | 100% |
| Financial Debt | 170 | 1% | 52 | 0% |
| Other Current Liabilities | 703 | 6% | 684 | 6% |
| Other Non-Current Liabilities | 674 | 6% | 639 | 5% |
| Total Liabilities | 1,547 | 13% | 1,375 | 11% |
| Total Shareholders' Equities | 10,313 | 87% | 10,685 | 89% |

Consolidated Cash Flow Statement

| NTD million | 1Q 2026 | 1Q 2025 | Dif. |
|---|--------------|----------------|--------------|
| From Operating Activities | 199 | 177 | 22 |
| Depreciation & Amortization | 131 | 127 | 4 |
| From Investing Activities | (84) | (1,263) | 1,179 |
| Acquisition of financial assets | 0 | (1,156) | 1,156 |
| Capital Expenditure | (83) | (104) | 21 |
| From Financing Activities | 29 | 12 | 17 |
| Effect of foreign exchange rate changes | 11 | 6 | 5 |
| Net Change in Cash | 155 | (1,068) | 1,223 |
| Beginning Balance | 3,110 | 4,166 | -1,056 |
| Ending Balance | 3,265 | 3,098 | 167 |



Q & A





For every life. With every trust.

www.scinopharm.com

1789 TT